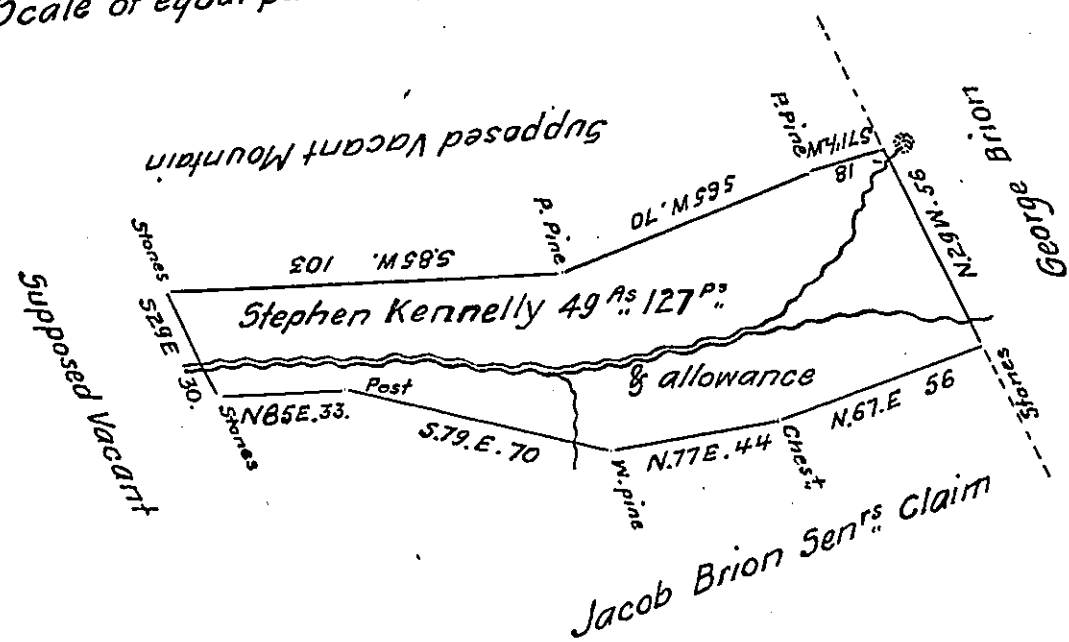


Scale of equal parts 60 perches to the inch



Draft of a tract of land situate in Gregg township Centre County containing forty nine acres and one hundred twenty seven perches & allowance of six per cent for roads &c^{ca}
 Surveyed 23^d February 1842 in pursuance of a Warrant granted to Stephen Kennelly dated the 11th day of February A.D. 1842 for 50 acres

To Jacob Sallade Esq^t }
 Surveyor General. }

Per Jacob Bollinger D.S.

IN TESTIMONY that the above is a copy of the original remaining on file in the Department of Internal Affairs of Pennsylvania, made conformably to an Act of Assembly approved the 16th day of February, 1833, I have hereunto set my Hand and caused the Seal of said Department to be affixed at Harrisburg, this thirteenth day of November 1907

Henry Houck
 Secretary of Internal Affairs.